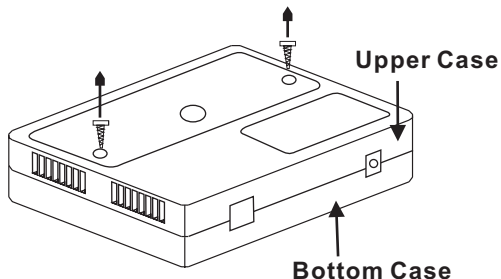


Installation Guide

Open the Upper Case

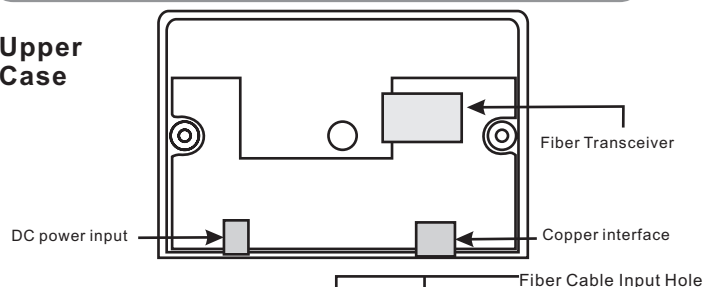
1. Remove two screws with a screwdriver.



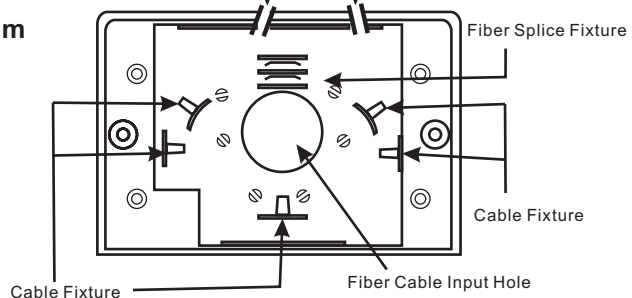
2. Separate the Upper & Bottom Case.

Upper & Bottom Case

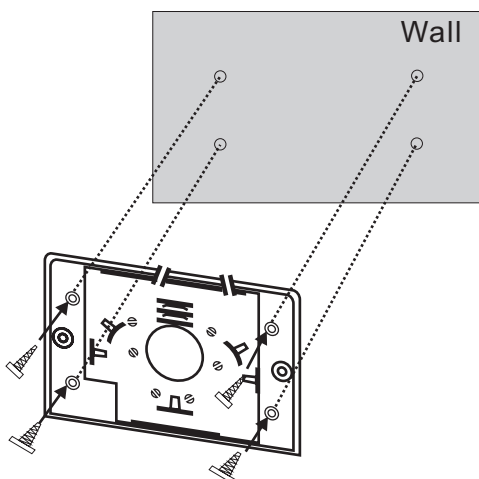
Upper Case



Bottom Case



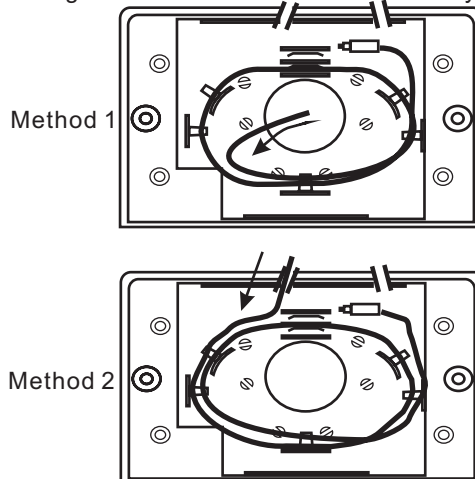
Wall-Mounting Installation



Screw the bottom case to the wall.

Optical Fiber Installation

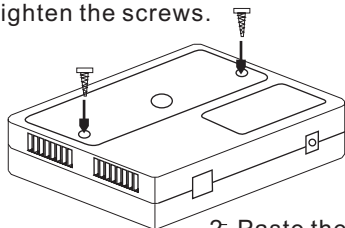
1. Arrange the fiber cable into the cable tray case.



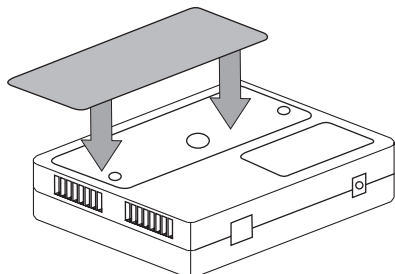
2. Connect the fiber cable with connector to the fiber transceiver in the upper case.

Assembly

1. Put the Upper and Bottom Case together and tighten the screws.



2. Paste the sticker on the device.



Connect the Power

