



SWH-3124GSFP

**22 ports 10/100/1000Base-T Uplink 2 Combo ports (10/100/1000 copper and 100/1000 SFP)
Managed Ethernet Switch**

KEY FEATURES

- Comply with IEEE 802.3 10BASE-T, 802.3u 100Base-TX, 802.3ab 1000Base-T, & 802.3z 1000Base-X standards
- 22 ports 10/100/1000Base-T
- 2 Combo ports (10/100/1000 copper and 100/1000 SFP)
- Store and Forward Switching Mechanism
- Auto-Cross over for MDI/MDIX in TP port
- Auto-Negotiation in TP port
- Support SNMP, Web, Telnet and Console management
- Comply with IEEE 802.1p Priority
- Comply with IEEE 802.1q Tag VLAN
- Comply with IEEE 802.1w Rapid Reconfiguration of Spanning Tree
- Comply with IEEE 802.1x Port Based Network Access Control
- Support IEEE 802.3ad Link Aggregation Control Protocol(LACP)
- Support jumbo frame on all ports up to 9600 bytes size
- Support QoS Classification based on IEEE 802.1p, VID, TOS/DSCP, EtherType and L4 Port
- IPv4 and IPv6 DSCP Remarking *
- Support DHCP Snooping
- Support Provider bridging with multiple VLAN tags (Q-in-Q)
- Support Rate Limit Control
- Support SNTP Time Server
- Support Static Multicasting
- Support IGMP Snooping v1, v2
- Support IGMP fast leave
- Support IGMP filtering via Filtering Profile
- Support Multicast channel limitation per port
- Support Multicast VLAN Register(MVR)
- Support DHCP client and provision server
- Support RFC3046 DHCP relay agent with option.82
- Support FTP, TFTP server and client firmware upgrade
- Support Access Control List(ACL)
- Support Radius Authentication
- Support SNMP v1, v2c and network management
- Support private, RFC-1213, RMON MIBs
- Support Port Mirror
- Support Power Down Trap Management
- Support 19 inch rack mount



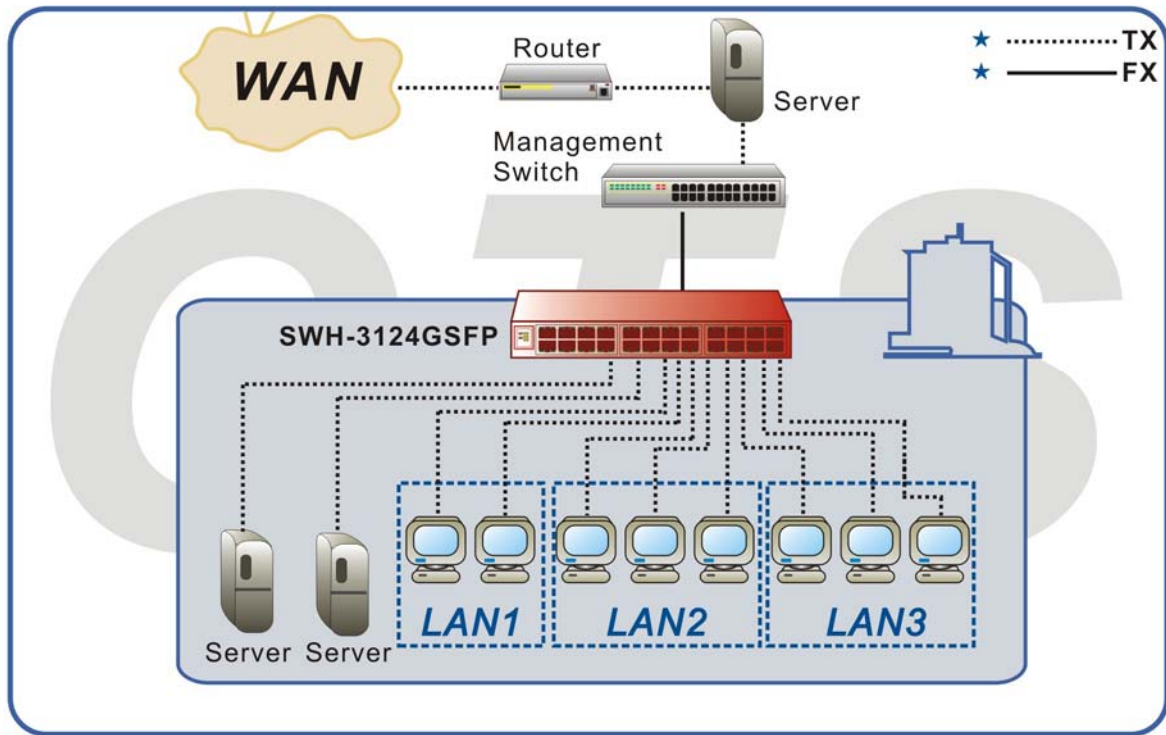
* Coming soon

DESCRIPTIONS

The Connection Technology Systems new managed SWH-3124SFP Switch is a Layer 2 switch that provides 22 ports 10/100/1000 copper and 2 combo ports (10/100/1000 and 100/1000 SFP slot) in front panel with "QoS" and "Q-in-Q VLAN tunneling" features. It creates a new standard in FTTX to solve network transmit bottle neck and provide VoIP, IPTV and high speed Internet to triple play users.

The SWH-3124SFP is designed to meet the emerging FTTX & Metro Ethernet requirement. Its low profile appearance with 1U height and standard rack-mount size achieve the highest density within a single rack. When massive of fiber ports need to deploy, SWH-3124PLUS provides the best performance and price ratio.

APPLICATION



SPECIFICATIONS

Standard

IEEE 802.3 10Base-T
IEEE 802.3u 100Base-TX/FX
IEEE 802.3ab 1000Base-T
IEEE 802.3z 1000Base-X
IEEE 802.3ad Link Aggregation
IEEE 802.1w Rapid Spanning Tree
IEEE 802.1p Priority
IEEE 802.1q Tag VLAN
IEEE 802.1X Port Based Network
Access Control

Interface

10/100/1000Base-T RJ-45 Port: x 22
Combo ports x 2
DB-9 (DTE) console port x 1

LED

Power, Port 23, 24 F/O, Console/Status,

Link/Act, Speed

Product Spec:

Mac address table: 8192
Memory buffer: Total 1391K bytes
VLANs: Support up to 128 VLAN Groups
Priority Queues: 4 Queues

Forward / Filter Rate

10M: 14,880/14,880pps
100M: 148,800/148,800pps
1000M: 1,488,000/1,488,000pps

Power

External Power adapter
Input AC120V~240V
Output DC12V
Power consumption: 35W

Typical Operation & Storage Temperature

Operation: 0° ~ 50°C
Storage Temperature: -20° ~ 60°C
Humidity: 5% ~ 90% non-condensing

Dimension & Weight

Size: 240 x 200 x 44 mm (WxDxH)
Shipping Weight: 2.5KG

Emission/Safety

FCC Class A, CE
* For further reports, please contact us for update.

ORDER INFORMATION

SWH-3124GSFP