



PSH-2109FX-F1

8 Ports 10/100Base-TX Managed Ethernet Switch with 1 Port 100Base-FX Uplink

KEY FEATURES

- Comply with IEEE 802.3 10BASE-T, 802.3u 100BASE-TX/FX standards
- Store and Forward Switching Mechanism
- Auto-Cross over for MDI/MDIX in TP port
- Auto-Negotiation in TP port
- Support Power/FDX/FX & TP Link Activity/TP Speed LED
- Comply with IEEE 802.1p Priority
- Comply with IEEE 802.1q Tag VLAN
- Comply with IEEE 802.1d Spanning Tree
- Support QoS Classification based on TOS
- QoS support with 4 traffic classes
- Support Q-in-Q VLAN Tunneling
- Support SNTP Time Server
- Support IGMP Snooping v1 and v2
- Support SNMP v1 and v2c
- Support DHCP Client
- Support Loop Detection
- Support LLDP
- Support Radius Authentication
- Support Power Down Trap Management
- Support SNMP/Telnet/Console/Web Managed interface
- Support FTP/TFTP Firmware Upgrade

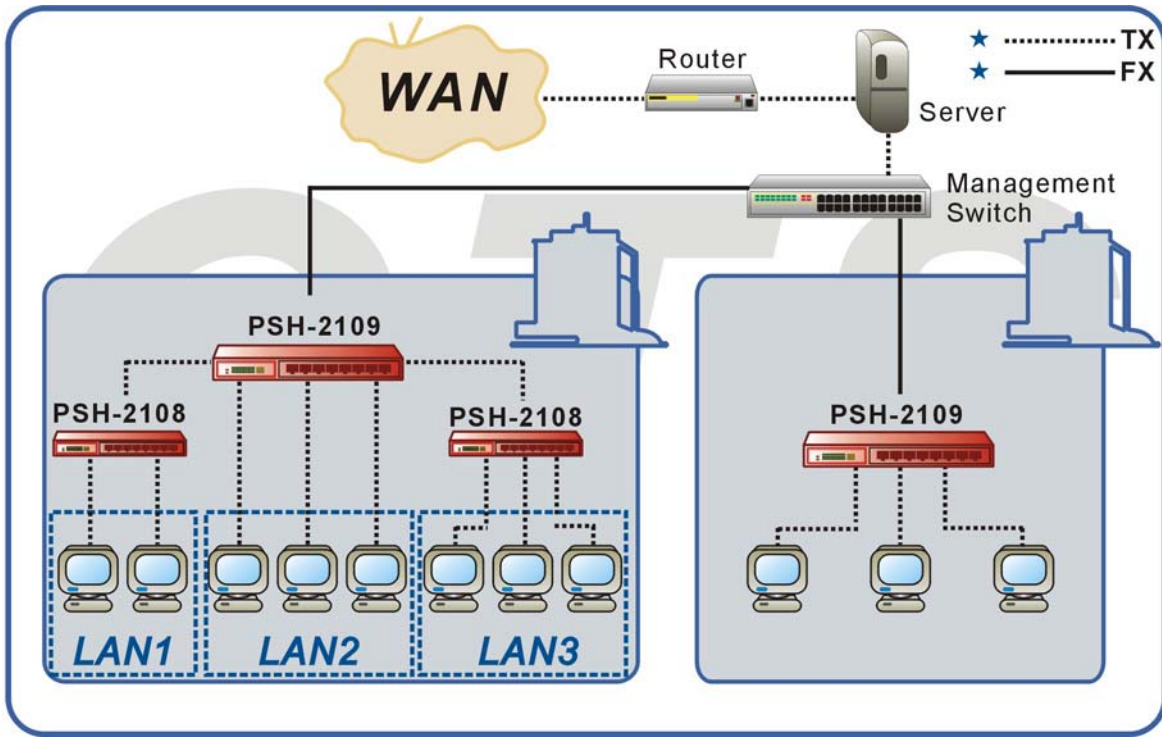


DESCRIPTIONS

PSH-2109FX-F1 Switch from Connection Technology Systems adapts the emerging CTS technology and able to expand a copper based network from 2km up to 80km through optical fibers. In addition, built-in Switching ASIC has turned PSH-2109FX-F1's function just like a 9 ports switch. User now may double their existing optical fiber bandwidth and upgrade their existing 100Base-TX or even 10/100Base-TX network easily and more cost effectively.

PSH-2109FX-F1 is fully compliant with IEEE802.3 and 802.3u standards. The installation & operation procedures of PSH-2109FX-F1 are simple & straightforward. Diagnostic LEDs located in the front panel indicate the real time operating status.

APPLICATION



SPECIFICATIONS

Management

Protocol : SNMP , Console ,WEB
Interface : DB-9 (DTE)

Standard

IEEE 802.3 10Base-T
IEEE 802.3u 100Base-TX/FX

Interface

10/100Base-T RJ-45 Port x 8
100Base-FX Port x 1

LED

Power, FDX/COL, TP Link/ACT, FO Link/ACT,
Status, Redundancy, Speed

MAC table & Memory buffer

MAC Address Table: 2 K
Memory Buffer: 128 K Byte

Forward / Filter Rate

10M: 14,880/14,880pps
100M: 148,800/148,800pps

Power

External Power adapter:
Input AC 120V-240V
Output DC 12V
Power Consumption: 9W

Typical Operation & Storage Temperature

Operation: 0°~50°C
Storage Temperature: -20°~60°C
Humidity: 5%~90% non-condensing

Dimension and Weight

245 x 160 x 34mm (WxDxH)
Shipping Weight 1.2 KG

Emission/Safety

FCC Class A
CE
*For further reports, please contact us for update

ORDER INFORMATION

Multi-Mode

PSH-2109FC-F1

Single-Mode

PSH-2109FC(SM-30)-F1

Single-Mode-WDM

PSH-2109W2A(SM-20/40)-F1

PSH-2109W2B(SM-20/40)-F1

