



SWH-2108

8 Ports 10/100Base-TX Managed Ethernet Switch

KEY FEATURES:

- Comply with IEEE 802.3 10BASE-T, 802.3u 100BASE-TX standards
- Store and Forward Switching Mechanism
- Auto-Cross over for MDI/MDIX in TP port
- Auto-Negotiation in TP port
- Support Power/FDX/TP Link Activity/TP Speed LED
- Comply with IEEE 802.1p Priority
- Comply with IEEE 802.1q Tag VLAN
- Comply with IEEE 802.1d Spanning Tree
- Support QoS Classification based on TOS
- QoS support with 4 traffic classes
- Support Q-in-Q VLAN Tunneling
- Support SNTP Time Server
- Support IGMP Snooping v1 and v2
- Support SNMP v1 and v2c
- Support DHCP Client
- Support Radius Authentication
- Support Power Down Trap Management
- Support SNMP/Telnet/Console/Web Managed interface
- Support FTP/TFTP Firmware Upgrade
- Rack Mountable
-



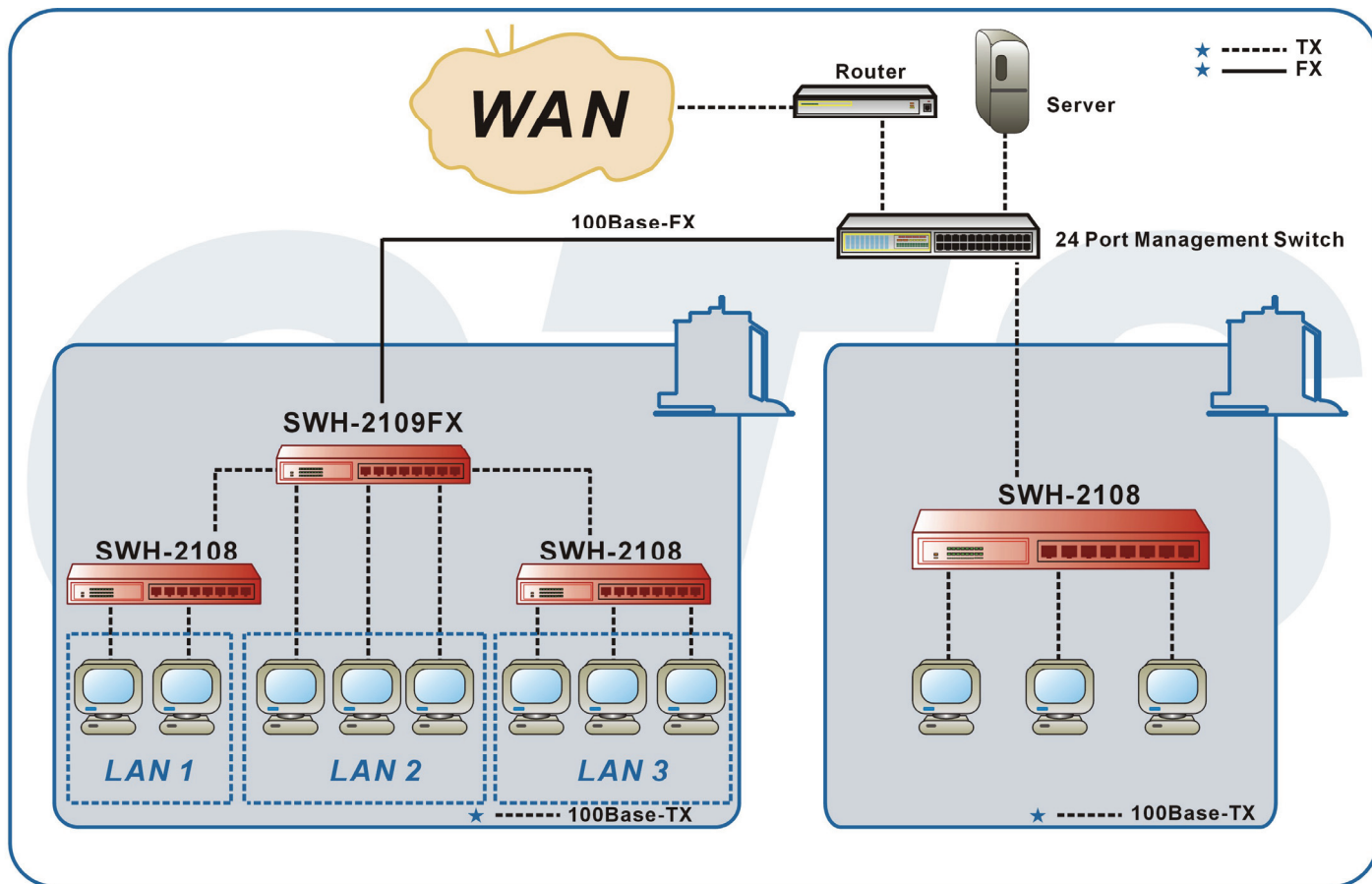
DESCRIPTION:

SWH-2108 is a powerful, high-performance 10/100Mbps manageable Layer 2, it is ideal for micro-segmenting large networks into smaller, connected subnets for overall improved performance, so enabling the most demanding bandwidth multimedia and imaging applications. Moreover, the 10/100Mbps auto-sensing capability provides an easy way in which to move from a 10Mbps to a 100Mbps network.

By providing plentiful IEEE approve standards --- Spanning Tree (802.1D), IGMP Snooping, Priority Tag (802.1P) and Double Tag (802.1Q Tunnel), the SWH-2108 can easy adapted into your network to protects you valuable investment in a multi-application environment. It also builds with advanced feature like bandwidth control, security and QoS ... which have more flexibility in CPE application.

Supporting standard SNMP management as well as WEB base management, SWH-2108 can easily integrate into worldwide popular network management.

APPLICATION



SPECIFICATIONS

Management

Protocol : SNMP , Console ,WEB
Interface : DB-9 (DTE)

Standard

IEEE 802.3 10Base-T
IEEE 802.3u 100Base-TX

Interface

10/100Base-T RJ-45 Port: x 8

LED

Power, FDX/COL , TP Link/ACT, link/ACT,
Status, Speed

MAC table & Memory buffer

MAC Address Table: 2K
Memory Buffer: 128K Byte

Forward / Filter Rate

10M: 14,880/14,880pps
100M: 148,800/148,800pps

Power

External Power adapter
Input AC120V~240V
Output DC12V
Power consumption: 9W

Typical Operation Temperature

Operation:0°~50°C
Storage Temperature:-20°~60°C
Humidity: 5%~90% non-condensing

Dimension and Weight

240 x 155 x 34 mm (WxDxH)
Shipping Weight 1.75 KG

Emission/Safety

FCC Class A
CE
*For further reports, please contact us for update

ORDER INFORMATION

SWH-2108

8 Ports 10/100Base-TX Managed Ethernet Switch