



## SWH-2109FX-F1

8 Port 10/100Base-TX Managed Ethernet Switch with 1 Port 100Base-FX Uplink

### KEY FEATURES

- Comply with IEEE 802.3 10Base-T Standard
- Comply with IEEE 802.3u 100Base-TX/FX Standard
- Comply with IEEE 802.1q Tag VLAN
- DHCP Client
- QoS Support with 4 traffic classes
- Store and Forward Switching Mechanism
- Auto Cross over for MDI/MDIX in TP port
- 10/100Mbps Auto-Negotiation in TP port
- Support 2K MAC address
- Support 128K Byte Packet Buffer
- Rack Mountable
- State Monitor- Model /Link /Duplex
- Enhanced Port Monitor-Traffic Counter
- Management Interface SNMP/Telnet/Console
- Support SNTP Time Server
- FTP/TFTP Firmware Upgrade
- Support Rate Limiting control
- User Authentication
- Fixed priority and weighted fair queuing
- Switch port configuration- Auto/Speed /Duplex /Auto MDI/MDIX
- Full/Half Duplex Mode Operation
- IP Security
- IP And Trap Configuration
- Even Log
- Power Down Trap
- Flow Control
- Rack Mountable

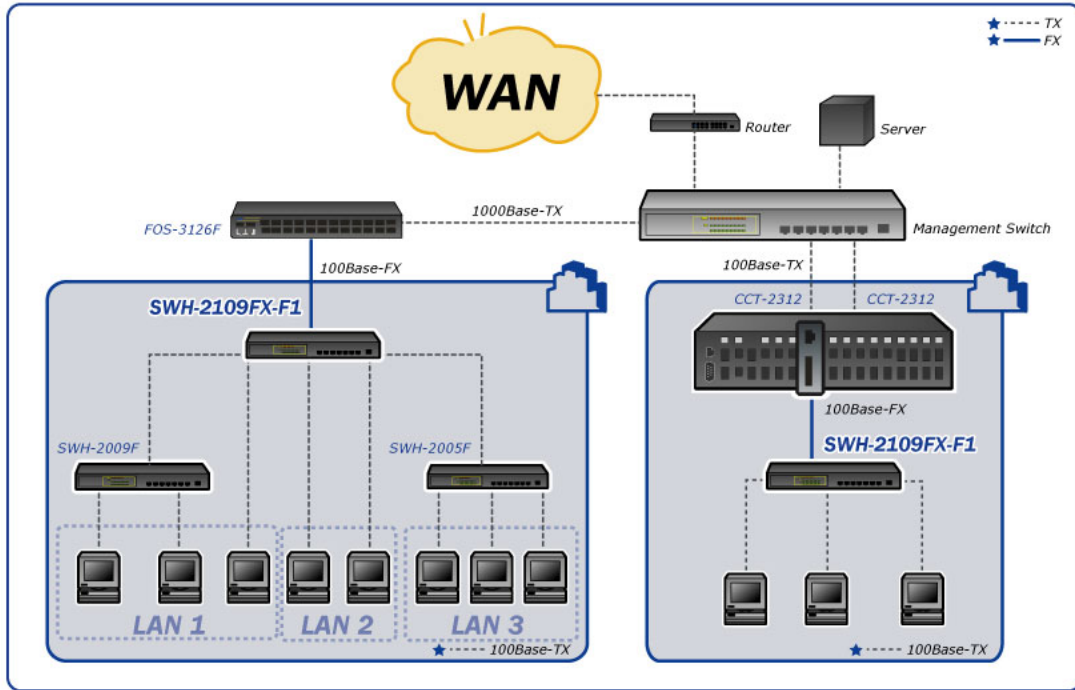


### DESCRIPTIONS

SWH-2109FX-F1 Switch from Connection Technology Systems adapts the emerging CTS technology and able to expand a copper based network from 2km up to 80km through optical fibers. In addition, built-in Switching ASIC has turned SWH-2109FX-F1's function just like a 9 ports switch. User now may double their existing optical fiber bandwidth and upgrade their existing 100Base-TX or even 10/100Base-TX network easily and more cost effectively.

SWH-2109FX-F1 is fully compliant with IEEE802.3 and 802.3u standards. The installation & operation procedures of SWH-2109FX-F1 are simple & straightforward. Diagnostic LEDs located in the front panel indicate the real time operating status.

# APPLICATION



# SPECIFICATIONS

## Standard

IEEE 802.3 10Base-T  
IEEE 802.3u 100Base-TX/FX

## Interface

10/100Base-T RJ-45 Port x 8  
100Base-FX Port x 1

## LED

Power, FDX/COL, TP Link/ACT, FO Link/ACT,  
Status, Redundancy, Speed

## MAC table & Memory buffer

MAC Address Table: 2 K  
Memory Buffer: 128 K Byte

## Forward / Filter Rate

10M: 14,880/14,880pps  
100M: 148,800/148,800pps

## Power

External Power adapter:  
Input AC 120V-240V  
Output DC 12V  
Power Consumption: 9W

## Typical Operation & Storage Temperature

Operation: 0°~50°C  
Storage Temperature: -20°~60°C  
Humidity: 5%~90% non-condensing

## Dimension and Weight

240 x 155 x 34mm (WxDxH)  
Shipping Weight 1.75 KG

## Emission/Safety

FCC Class A  
CE

\*For further reports, please contact us for update

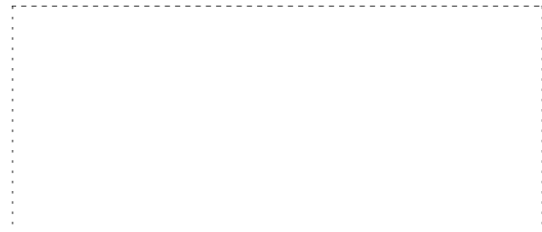
# ORDER INFORMATION

## Multi-Mode

SWH-2109FC-F1

## Single-Mode

SWH-2109FC(SM-30)-F1



Connection Technology Systems

18F-6, No 79, Sec. 1, Hsin Tai Wu Rd, Hsichih, Taipei Hsien, Taiwan / <http://www.ctsystem.com>  
TEL:+886-2-26989201 / FAX:+886-2-26989662 / E-mail: [cts\\_marketing@ctsystem.com](mailto:cts_marketing@ctsystem.com)

2006 JAN