



SWH-2109FX/W2X-PLUS-F1

8 Port 10/100BASE-TX Ethernet Switch with 1 Port 100BASE-FX Uplink

KEY FEATURES

- Comply with IEEE 802.3 10BASE-T, 802.3u 100BASE-TX/FX standards
- Store and Forward Switching Mechanism
- Auto-Cross over for MDI/MDIX in TP port
- Auto-Negotiation in TP port
- Support Power/FDX/FX & TP Link Activity/TP Speed LED
- Comply with IEEE 802.1p Priority
- Comply with IEEE 802.1q Tag VLAN
- Comply with IEEE 802.1d Spanning Tree
- Support Rate Limit Control
- Support QoS Classification based on TOS
- QoS support with 4 traffic classes
- Support Q-in-Q VLAN Tunneling
- Support SNTP Time Server
- Support IGMP Snooping v1 and v2
- Support SNMP v1 and v2c
- Support DHCP Client
- Support Radius Authentication
- Support Power Down Trap Management
- Support SNMP/Telnet/Console/Web Managed interface
- Support FTP/TFTP Firmware Upgrade
- Rack Mountable

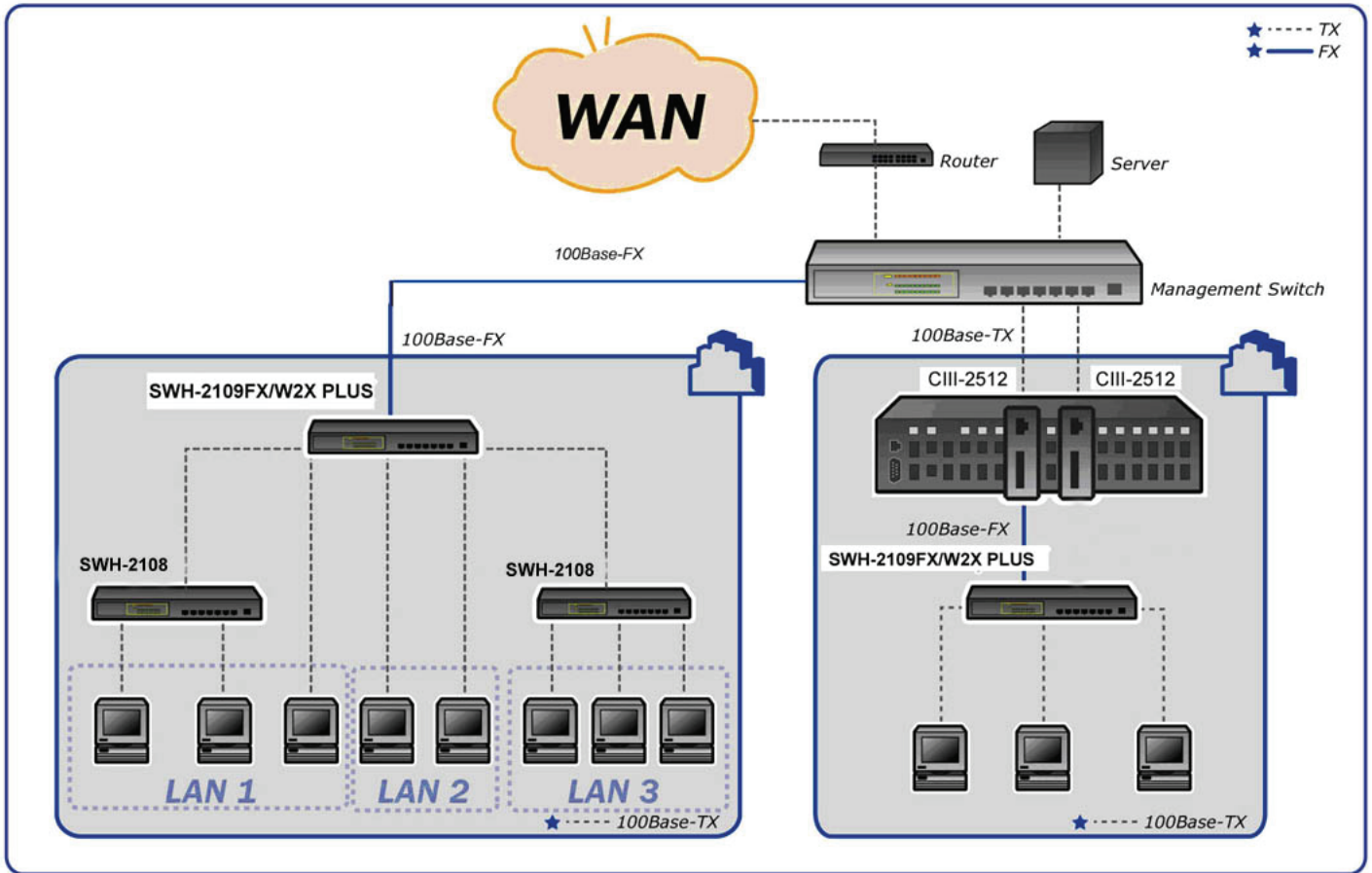


DESCRIPTIONS

SWH-2109FX/W2X-PLUS-F1 Switch from Connection Technology Systems adapts the emerging CTS technology and able to expand a copper based network from 2km up to 80km through optical fibers. In addition, built-in Switching ASIC has turned SWH-2109FX/W2X-PLUS-F1 function just like a 9 ports switch.

SWH-2109FX/W2X-PLUS-F1 is fully compliant with IEEE802.3 and 802.3u standards. The installation & operation procedures of SWH-2109FX/W2X-PLUS-F1 are simple & straightforward. Diagnostic LEDs located in the front panel indicate the real time operating status.

APPLICATION



SPECIFICATIONS

Management

Protocol :SNMP , Console , WEB
Interface : DB-9 (DTE)

Standard

IEEE 802.3 10Base-T
IEEE 802.3u 100Base-TX/FX

Interface & Port number

10/100Mbps RJ-45 port x 8
100Mbps FX port x 1

LED

Power, FDX/COL, Speed, TP Link/ACT,
FO Link/ACT, Status

MAC table & Memory buffer

Mac address table: 2K
Memory buffer: 128K

Forward / Filter Rate

10M: 14,880/14,880pps
100M: 148,800/148,800pps

Power

External Power adapter:
Input AC 120V-240V
Output DC 12V
Power Consumption: 9W

Typical Operation & Storage Temperature

Operation: 0° ~ 50°C
Storage Temperature: -20° ~ 60°C
Humidity: 5% ~ 90% non-condensing

Dimension and Weight

Size: 240 x 155 x 34 mm (WxDxH)
Shipping Weight: 1.75KG

Emission/Safety

FCC Class A, CE
* For further reports, please contact us for update.

ORDER INFORMATION

Multi-Mode

SWH-2109FC-PLUS-F1
SWH-2109FT-PLUS-F1

Single-Mode

SWH-2109FC(SM-30/50/60/80/100)-PLUS-F1

Single-Mode-WDM

SWH-2109W2A(SM-20)-PLUS-F1
SWH-2109W2B(SM-20)-PLUS-F1

