



CCT-2312BTFX / W2X

10/100Base-TX to 100Base-FX IN-BAND Management Switch Media Converter Module

KEY FEATURES

- Comply with IEEE 802.3 10BASE-T Standard
- Comply with IEEE 802.3u 100Base-TX/FX Standard
- Store and Forward Switching Mechanism
- Auto-Cross over for MDI/MDIX in TP port
- Auto-Negotiation in TP port
- Support 1K MAC address
- Support 64K Byte Packet Buffer
- Support Power/Link Activity/FDX/Speed/Status LED
- Support Loop Back and Diagnostic Test Button
- Support Link Path Through
- Compatible with CCT-CHASSIS-II Module Management
- Compatible with CCT-CHASSIS-II Module H/W specification
- Configuration DIP Switch Support Auto/Speed/Duplex/Auto MDIX/MDIX
- Local port management function
 - State Monitor - Model/Media/Link/Speed/Duplex/Activity
 - Enhanced Port Monitor - Traffic Counter
 - Port Configuration - Auto/Speed/Duplex/Flow Control/Rate Limiting/Broadcast Storm
- Remote port management function
 - State Monitor - Model/Media/Link/Speed/Duplex/Activity/Power
 - Port Configuration - Auto/Speed/Duplex/Flow Control
- Rate Limiting Configuration
- Redundant Configuration
- IN-BAND Diagnostic (Loop Back Test)
- Fiber Transceiver Information
- Plug-and-Play installation



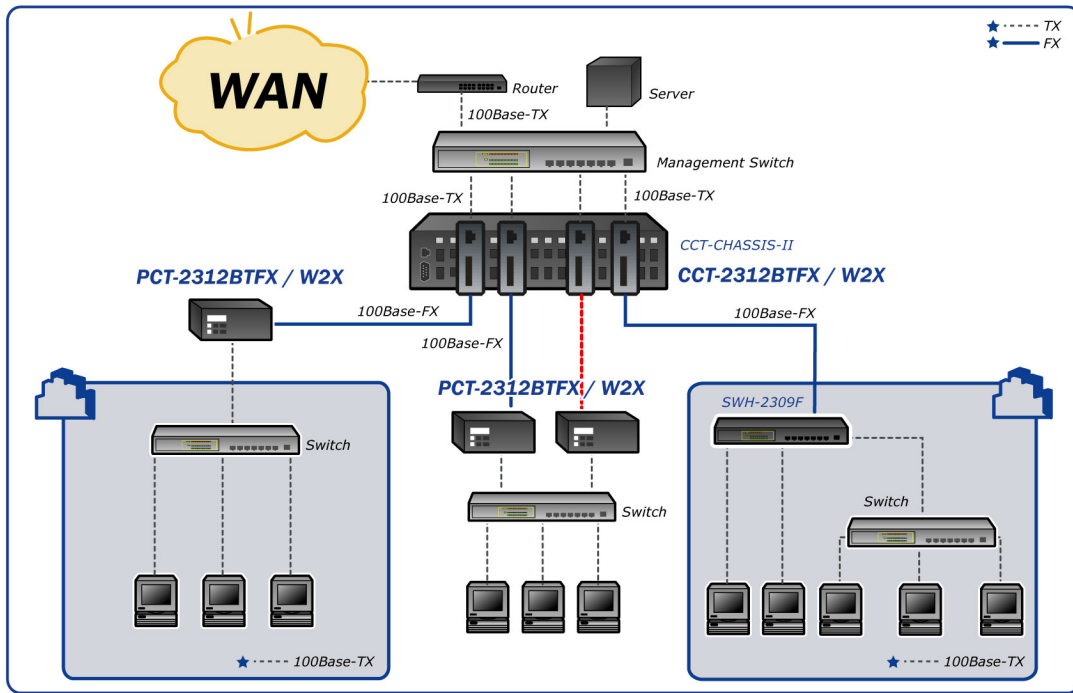
DESCRIPTIONS

CCT-2312BTFX / W2X Converter from Connection Technology Systems is designed to fit into a series of CTS CCT-CHASSIS-II converter Chassis. This slide-in converter adapts the emerging CTS technology and able to expand a copper based network up to 40km through a single optical fiber and it also support existing dual fiber transceiver that can up to 100km.

In addition, built-in Switching ASIC has turned CCT-2312BTFX / W2X function just like a 2 ports switch instead of a traditional converter. User now may double their existing optical fiber bandwidth and upgrade their existing 100Base-TX or even 10Base-T network easily and more cost effectively.

CCT-2312BTFX / W2X are fully compliant with IEEE802.3 & 802.3u standards. The installation & operation procedure of the CCT-2312BTFX / W2X are simple & straightforward. Diagnostic LEDs located in the front panel indicate the real time operating status. Moreover, if installed in the manageable CCT-CHASSIS-II, network administrator can remotely monitor the CCT-2312BTFX / W2X status via standard SNMP manager.

APPLICATION



SPECIFICATIONS

Standard

IEEE 802.3 10BASE-T
IEEE 802.3u 100BASE-TX/FX

Interface

10/100Mbps RJ-45 port x 1
100Mbps FX port x 1

LED

Power, FDX/COL, Speed, TP Link/ACT,
FO Link/ACT, Status

Redundancy

Compatible with CCT-CHASSIS-II Fiber
Redundancy

MAC address table & Memory buffer

Mac address table: 1K
Memory buffer: 64K

Forward / Filter Rate

10M: 14,880/14,880pps
100M: 148,800/148,800pps

Power

Voltage requirement: DC 12V
Power Consumption: 3.5W

Typical Operation & Storage Temperature

Operation: 0° ~ 50°C
Storage: -20° ~ 60°C
Humidity: 5% ~ 90% non-condensing

Dimension & Weight

Size: 119 x 86 x 25mm (WxDxH)
Shipping Weight: 0.3KG

Emission/Safety

FCC Class A, CE
* For further reports, please contact us for
update.

ORDER INFORMATION

Multi-Mode

CCT-2312BTFC
CCT-2312BTFT

Single-Mode

CCT-2312BTFC(SM-30/ 50/ 80/ 100)

Single-Mode-WDM

CCT-2312W2A(SM-20/40)
CCT-2312W2B(SM-20/40)

