

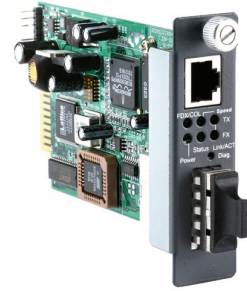


CCT-3312BTFX / W2X

10/100/1000Base-TX to 1000Base-FX IN-BAND Management Switch Media Converter Module

KEY FEATURES

- Comply with IEEE 802.3 10Base-T Standard
- Comply with IEEE 802.3u 100Base-TX Standard
- Comply with IEEE 802.3ab 1000Base-T Standard
- Comply with IEEE 802.3z 1000Base-X Standard
- Store and Forward Switching Mechanism
- Auto-Cross over for MDI/MDIX in TP port
- Auto-Negotiation in TP port
- Support 4K MAC address
- Support 256K Byte Packet Buffer
- Support Loop Back and Diagnostic Test Button
- Compatible with CCT-CHASSIS-II Module Management
- Compatible with CCT-CHASSIS-II Module H/W specification
- Configuration DIP Switch Support Auto/Speed/Duplex/Auto MDIX/MDIX
- Local port management function
 - State Monitor - Model/Media/Link/Speed/Duplex/Activity
 - Enhanced Port Monitor - Traffic Counter
 - Port Configuration - Auto/Speed/Duplex/Flow Control
- Remote port management function
 - State Monitor - Model/Media/Link/Speed/Duplex/Activity/Power
 - Port Configuration - Auto/Speed/Duplex/Flow Control
- IN-BAND Diagnostic (Loop Back Test)
- Fiber Transceiver Information
- Plug-and-Play installation

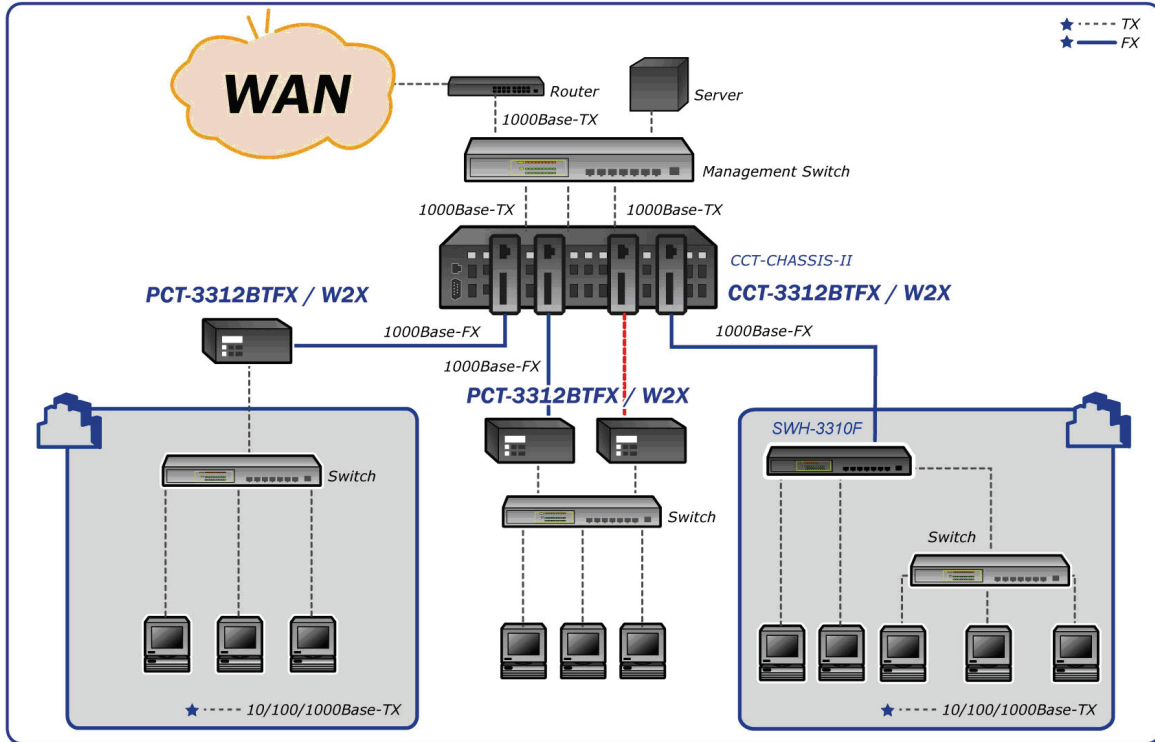


DESCRIPTIONS

CCT-3312BTFX Converter from Connection Technology Systems is designed to fit into a series of CTS CCT-CHASSIS-II converter Chassis. This slide-in converter adapts the emerging CTS technology and able to expand a copper based network from 550m up to 80KM through a single optical fiber and existing dual fiber. In addition, built-in Switching ASIC has turned CCT-3312BTFX function just like a 2 ports switch instead of a traditional converter. User now may double their existing optical fiber bandwidth and upgrade their existing 1000Base-T or even 10/100Base-TX network easily and more cost effectively.

CCT-3312BTFX is fully compliant with IEEE802.3, 802.3u and IEEE 802.3ab standards. The installation & operation procedures of the CCT-3312BTFX are simple & straightforward. Diagnostic LEDs located in the front panel indicate the real time operating status. Moreover, if installed in the manageable CCT-CHASSIS-II, network administrator can remotely monitor diagnostic/loop back and configure the PCT-3312BTFX status via Console and standard SNMP manager.

APPLICATION



SPECIFICATIONS

Standard

IEEE 802.3 10Base-T
 IEEE 802.3u 100Base-TX
 IEEE 802.3ab 1000Base-TX/FX
 IEEE 802.3z 1000Base-X

Interface

10/100/1000Mbps RJ45 port x 1
 1000Mbps FX port x 1

LED

Power, FDX/COL, Speed, TP Link/ACT,
 FO Link/ACT, Status

MAC address table & Memory buffer

Mac address table: 4K
 Memory buffer: 256K

Forward / Filter Rate

10M: 14,880/14,880pps
 100M: 148,800/148,800pps
 1000M: 1,488,000/1,488,000pps

Power

External Power adapter:
 Output DC 12V
 Power Consumption: 3.7 W

Typical Operation Temperature

Operation: 0° ~ 40°C
 Storage: -20° ~ 60°C
 Humidity: 5% ~ 90% non-condensing

Dimension & Weight

Size: 119 x 86 x 25mm (WxDxH)
 Shipping Weight: 0.3KG

Emission/Safety

FCC Class A, CE
 * For further reports, please contact us for update.

ORDER INFORMATION

Multi-Mode

CCT-3312BTFC

Single-Mode

CCT-3312BTFC(SM-10/20/30/50/80)

Single-Mode-WDM

CCT-3312W2A(SM-20/40)

CCT-3312W2B(SM-20/40)

