



PCT-2312BTFX / W2X

10/100Base-TX to 100Base-FX IN-BAND Management Switch Media Converter

KEY FEATURES

- Comply with IEEE 802.3 10Base-T Standard
- Comply with IEEE 802.3u 100Base-TX/FX Standard
- Support IN-BAND Loop Back and Diagnostic test button
- Support Link Pass Through
- Store and Forward Switching Mechanism
- Auto Cross over for MDI/MDIX in TP port
- 10/100Mbps Auto-Negotiation in TP port
- Support 1K MAC address
- Support 64K Byte Packet Buffer
- Compatible with CCT-CHASSIS-II Remote Module Management
- Remote port management function
 - State Monitor-Model /Media /Link/Speed /Duplex /Power
 - Port Configuration- Auto /Speed /Duplex /Flow Control
- Fiber Transceiver Information
- IN-BAND Diagnostic (Loop Back Test)



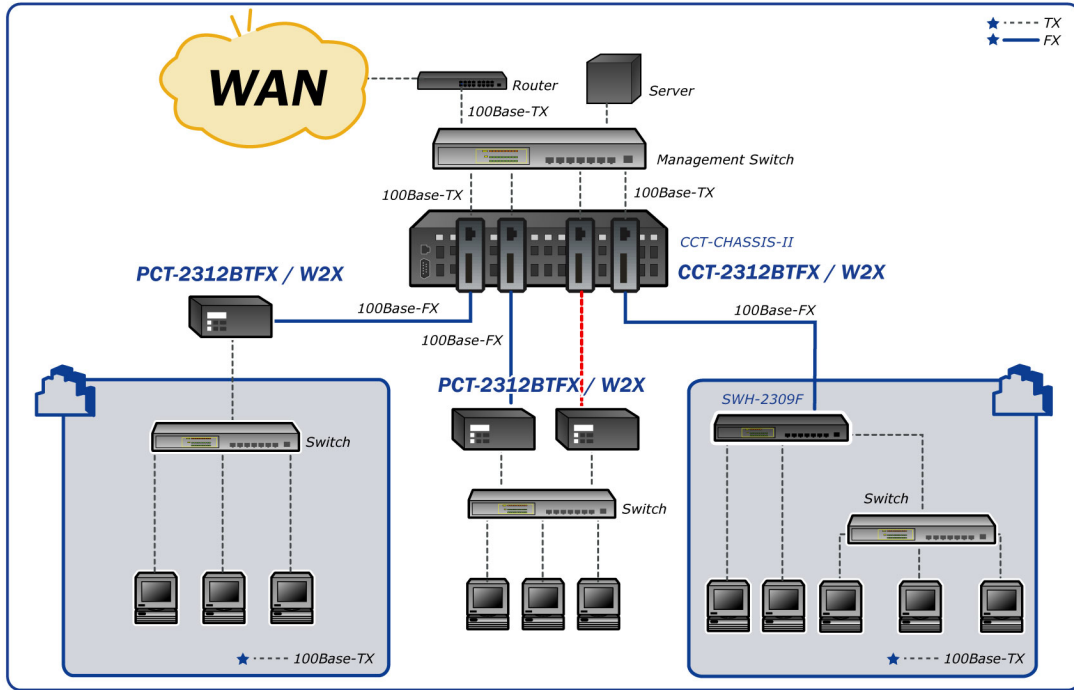
DESCRIPTIONS

PCT-2312BTFX / W2X Converter from Connection Technology Systems are designed to fit into a series of CTS CCT-CHASSIS-II converter Chassis. This slide-in converter adapts the emerging CTS technology and able to expand a copper based network up to 40km through a single optical fiber and it also support existing dual fiber transceiver that can up to 100km.

In addition, built-in Switching ASIC has turned PCT-2312BTFX / W2X function just like a 2 ports switch instead of a traditional converter. User now may double their existing optical fiber bandwidth and upgrade their existing 100Base-TX or even 10Base-T network easily and more cost effectively.

PCT-2312BTFX / W2X are fully compliant with IEEE802.3 & 802.3u standards. The installation & operation procedures of the PCT-2312BTFX / W2X are simple & straightforward. Diagnostic LEDs located in the front panel indicate the real time operating status. Moreover, if installed in the manageable CCT-CHASSIS-II, network administrator can remotely monitor the PCT-2312BTFX / W2X status via standard SNMP manager.

APPLICATION



SPECIFICATIONS

Standard

IEEE 802.3 10BASE-T
IEEE 802.3u 100BASE-TX/FX

Interface

10/100Base-T RJ-45 Port: x 1
100Base-FX Port x 1

LED

Power, FDX/COL, Speed, TP Link/ACT, FO Link/ACT, Status

Redundancy

Fiber

MAC table & Memory buffer

MAC Address Table: 1 K
Memory Buffer: 64 K Byte

Forward / Filter Rate

10M: 14,880/14,880pps
100M: 148,800/148,800pps

Power

External Power adapter
Input AC 120V~ 240V
Output DC 12V
Power consumption: 4 W

Typical Operation Temperature

Operation: 0°~50°C
Storage Temperature: -20°~60°C
Humidity: 5%~90% non-condensing

Dimension & Weight

140 x 78 x 26mm (W x D x H)
Shipping Weight : 0.8KG

Emission/Safety

FCC Class A
CE

*For further reports, please contact us for update

ORDER INFORMATION

Multi-Mode

PCT-2312BTFC
PCT-2312BTFT

Single-Mode

PCT-2312BTFC(SM-30/ 50/ 80/ 100)

Single-Mode-WDM

PCT-2312W2A(SM-20/40)
PCT-2312W2B(SM-20/40)

