



PCT-3312BTFX / W2X

10/100/1000Base-TX to 1000Base-FX IN-BAND Management Switch Media Converter

KEY FEATURES

- Comply with IEEE 802.3 10Base-T Standard
- Comply with IEEE 802.3u 100Base-TX Standard
- Comply with IEEE 802.3ab 1000Base-T Standard
- Comply with IEEE 802.3z 1000Base-X Standard
- Support IN-BAND Loop Back and Diagnostic
- Store and Forward Switching Mechanism
- Auto Cross over for MDI/MDIX in TP port
- 10/100Mbps Auto-Negotiation in TP port
- 10/100/1000Mbps Auto-Negotiation in TP port
- Support 4K MAC address
- Support 256K Byte Packet Buffer
- Compatible with CCT-CHASSIS-II Remote Module Management
- Remote port management function
 - State Monitor-Model /Media /Link/Speed /Duplex /Activity /Power
 - Port Configuration- Auto /Speed /Duplex /Flow Control
- IN-BAND Diagnostic (Loop Back Test)
- Fiber Transceiver Information

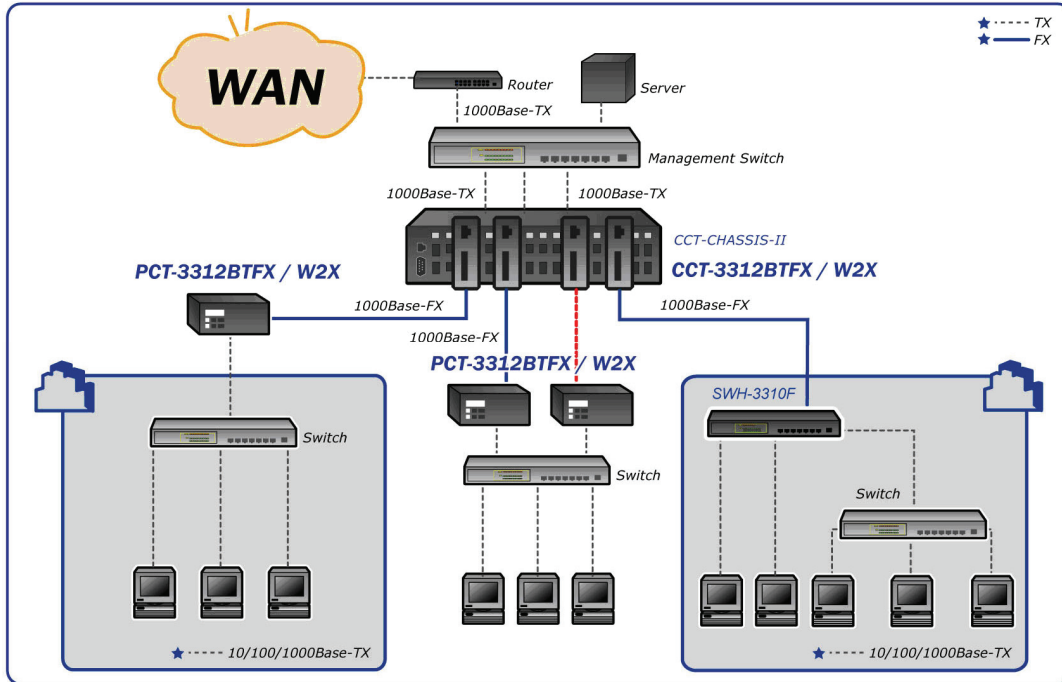


DESCRIPTIONS

PCT-3312BTFX / W2X Converter from Connection Technology Systems is designed to fit into a series of CTS CCT-CHASSIS-II converter Chassis. This stand alone converter adapts the emerging CTS technology and able to expand a copper based network from 550M up to 80KM through a single optical fiber and existing dual fiber. In addition, built-in Switching ASIC has turned PCT-3312BTFX / W2X function just like a 2 ports switch instead of a traditional converter. User now may double their existing optical fiber bandwidth and upgrade their existing 1000Base-T or even 10/100Base-TX network easily and more cost effectively.

PCT-3312BTFX / W2X is fully compliant with IEEE802.3, 802.3u and 802.3ab standards. The installation & operation procedures of the PCT-3312BTFX / W2X are simple & straightforward. Diagnostic LEDs located in the front panel indicate the real time operating status. Moreover, if installed with the manageable CCT-3312BTFX / W2X / CCT-CHASSIS-II, network administrator can remote monitor, diagnostic/loop back and configure the PCT-3312BTFX / W2X status via Console and standard SNMP manager.

APPLICATION



SPECIFICATIONS

Standard

IEEE 802.3 10Base-T
 IEEE 802.3u 100Base-TX
 IEEE 802.3ab 1000Base-T
 IEEE 802.3z 1000Base-X

Interface

10/100/1000Base-T RJ-45 Port x 1
 1000Base-FX Port x 1

LED

Power, FDX/COL, TP Link/ACT, FO Link/ACT, Status

MAC table & Memory buffer

MAC Address Table: 4 K
 Memory Buffer: 256 K Byte

Forward / Filter Rate

10M: 14,880/14,880pps
 100M: 148,800/148,800pps
 1000M: 1,488,000/1,488,000pps

Power

External Power adapter
 Input AC 120V~ 240V
 Output DC 12V
 Power consumption: 4.2 W

Typical Operation Temperature

Operation: 0°~50°C
 Storage Temperature: -20°~60°C
 Humidity: 5%~90% non-condensing

Dimension & Weight

140 x 78 x 26mm(W x D x H)
 Shipping Weight : 0.8KG

Emission/Safety

FCC Class A
 CE
 *For further reports, please contact us for update

ORDER INFORMATION

Multi-Mode

PCT-3312BTFC

Single-Mode

PCT-3312BTFC(SM-10/20/30/50/80)

Single-Mode-WDM

PCT-3312W2A(SM-20/40)
 PCT-3312W2B(SM-20/40)

