



## **CVT-100BTFX / W2X**

**Fast Ethernet 10/100Base-TX to 100Base-FX Switching Converter**

### **KEY FEATURES**

- Comply with IEEE 802.3 10Base-T, 802.3u 100Base-TX & 100Base-FX Standard
- Store and Forward Switching Mechanism
- Auto-Cross over for MDI/MDIX in TP port
- 10/100Mbps Auto-Negotiation in TP port
- Support 1K MAC address
- Support 48K Byte Packet Buffer
- Support Link Alarm
- Support Power/FDX/FX & TP Link Activity/FX & TP Speed LED
- Support Switch mode & Pure converter mode
- Voltage supervisor

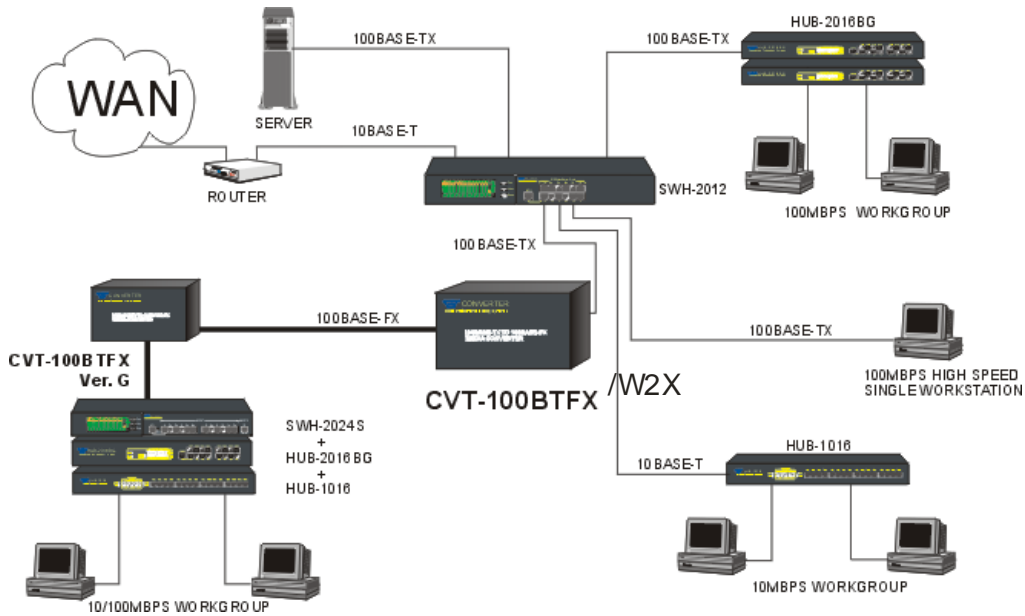


### **DESCRIPTIONS**

CVT-100BTFX / W2X Converter from Connection Technology Systems is compact size units and fulfill the FCC emission standards. This converter converts 10/100Base-TX to 100Base-FX with LED diagnostics for Power, Activity, Link and Full Duplex / Half Duplex operation. All of are fully compliant with the IEEE 802.3 & 802.3u Fast Ethernet standards and feature one STP-RJ45 10/100Base-TX port as well as one Fiber Optic 100Base-FX (SC/ST/MTRJ) port.

The CVT-100BTFX/W2X is used in applications where multimode fiber is installed while the CVT-100BTFC (SM-30/50/60/80/100) can be used where single mode fiber cables are in use. In single mode applications distances up to 10,000m/30,000m can be achieved. Each unit is powered by an external power supply. Installation of the Fast Ethernet converter is simple and straightforward. The powerful features are as 10/100 Auto Negotiation, Auto cross over for TP port, Fiber Link Alarm, Voltage supervisor, and support switch mode & pure converter mode.

# APPLICATION



# SPECIFICATIONS

## Standard

IEEE 802.3 10Base-T  
IEEE 802.3u 100Base-TX & 100Base-FX

## Interface

10/100Base-T RJ-45 Port x 1  
100Base-FX Port x 1

## Switching Method

Store and forward

## Data Transfer Rate

200 Mbps-Full duplex

## MAC Table & Memory Buffer

MAC address table :1K  
Memory buffer:48K

## Forward / Filtering Rate

10M: 14,880/14,880pps  
100M: 148,800/148,800pps

## Power

Ext. Power Supply, DC 5V, 1.6A  
Power consumption: 5 W

## Typical Operation Temperature

Operation:0° ~ 50°C  
Storage Temperature: -20° ~ 60°C  
Humidity:5% ~ 90% non-condensing

## Dimension and Weight

Size: 71 x 97 x 26 mm (WxDxH)  
Shipping Weight: 0.6KG

## Emission/Safety

FCC Class A, CE  
\* For further reports, please contact us for update.

# ORDER INFORMATION

## Multi-Mode

CVT-100BTFC  
CVT-100BTFT  
CVT-100BTFMR

## Single-Mode

CVT-100BTFC(SM-30/50/60/80/100)

## Single-Mode-WDM

CVT-100W2A (SM-20/40)  
CVT-100W2B (SM-20/40)

